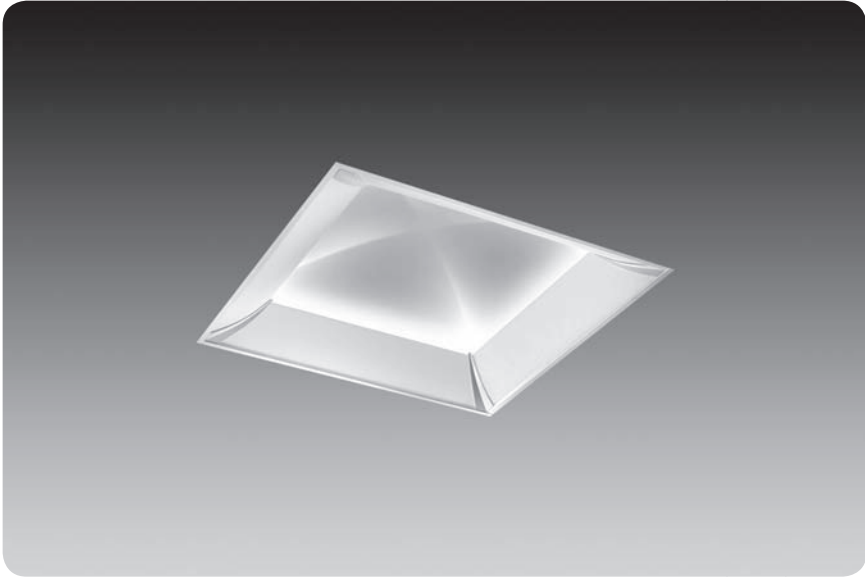


sky™ 2x2



Covered by the following U.S. Patents: D428,516; 430,339; 437,446; 443,949.

features

2'x2' recessed indirect with four-sided perforated diffuser and domed reflector

Seamless, one-piece reflector design inspired by quadripartite vault form seen in Romanesque and Gothic architecture.

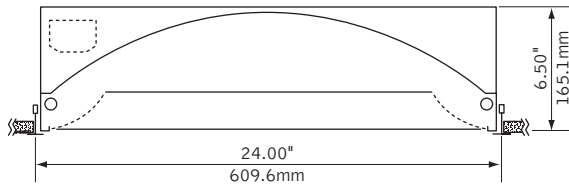
Perforated lamp shield lifts and shifts for easy relamping and conceals lamps on four sides of housing.

High reflectance, low gloss Matte White finish controls glare and provides high efficiency.

All luminaire combinations may be continuously row mounted.

Sky™ provides high angle uniform distribution ideal for general illumination. Non-directional symmetrical design makes Sky extremely versatile.

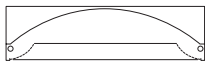
dimensional data



lamping options



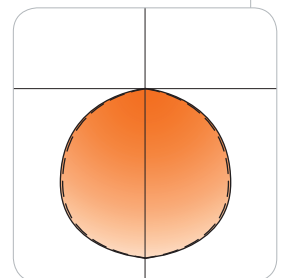
BIAx LAMPS



T5/T5HO LAMPS

performance

4-Lamp T5
49% Efficiency
854 cd @ 0°



Visit focalpointlights.com for complete photometric data.

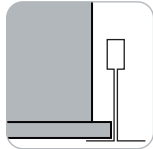
fixture:

project:

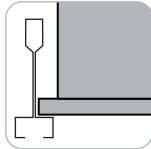
mounting information

grid

specify "G" for flat 9/16" and 15/16" tee or "ST" for 9/16" slot tee grid types.



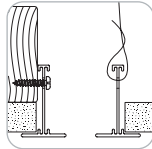
"G" flat tee



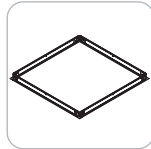
"ST" slot tee
Luminaire sits on top of 9/16" slot tee grid.

drywall frame kit

specify "DF" Drywall Frame Kit for drywall ceiling conditions.



Use tie-wire or screws to secure frame kit.



cut out dimensions:
2': Min: 24.125"
Max: 24.563"

specifications

construction

Four-piece 22 Ga. steel perforated lamp shield with corner castings. Shield is removed through lift and shift for easy relamping. Bottom access 20 Ga. steel ballast compartment.

Weight: 23 lbs

optic

Seamless one-piece 20 Ga. steel quadripartite reflector finished in Matte Satin White powder coat.

electrical

Electronic ballasts are thermally protected and have a Class "P" rating. Optional dimming ballasts available. Consult factory for dimming specifications and availability. UL and cUL listed.

finish

Polyester powder coat applied over a 5-stage pre-treatment.

ordering

luminaire series		<u>FSK</u>
Sky	FSK	
nominal size		<u>22</u>
2' x 2'	22	
distribution		<u>B</u>
Bi-Directional	B	
lamp quantity		<u>4</u>
Four Lamp	4	
lamp type		<u></u>
55 Watt Biax	BX55	
T5	T5	
T5H0	T5H0	
ballast		<u></u>
Electronic Program Start <10% THD	S	
Electronic Dimming Ballast*	D	
voltage		<u></u>
120 Volt	120	
277 Volt	277	
347 Volt	347	
mounting		<u></u>
Grid	G	
(*Luminaire sits on top of 9/16" slot tee.)		
shielding		<u>PS</u>
Perforated Shield	PS	
factory options		<u></u>
Air Return	AR	
Chicago Plenum	CP	
Drywall Frame Kit	DF	
(Cut out dimensions: Min:24.25"/Max: 24.563")		
Emergency Battery Pack*	EM	
Earthquake Clip	EQ	
HLR/GLR Fuse	FU	
Flex Whip*	FW	
Include 3000K Lamp	L830	
Include 3500K Lamp	L835	
Include 4100K Lamp	L841	
Lutron™ Sensor Feed* (EcoSystem ballast required)	SF	
finish		<u>WH</u>
Matte Satin White	WH	

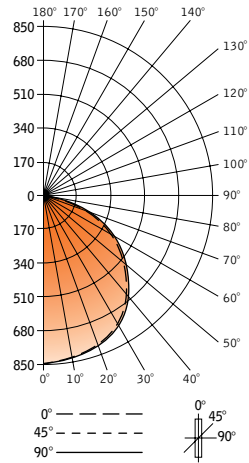
* for more information see Reference section.

sky™ 2x2



Filename: FSK224T5PS.IES
 Catalog #: FSK-22-B-4-T5-S-120-G-PS-WH
 Efficiency: 49%
 Test #: 10313.0

CANDLEPOWER DISTRIBUTION



Spacing 1.3
 Criterion: 1.3

Vertical Angle	Horizontal Angle				Zonal Lumens
	0°	22.5°	45°	67.5°	
0°	854	854	854	854	854
5°	854	852	855	852	852
15°	827	829	826	825	822
25°	766	765	764	764	763
35°	681	682	679	675	675
45°	582	580	579	576	578
55°	468	470	469	468	459
65°	354	359	354	353	347
75°	237	246	237	234	226
85°	56	54	51	53	53
90°	0	0	0	0	0
95°	0	0	0	0	0
105°	0	0	0	0	0
115°	0	0	0	0	0
125°	0	0	0	0	0
135°	0	0	0	0	0
145°	0	0	0	0	0
155°	0	0	0	0	0
165°	0	0	0	0	0
175°	0	0	0	0	0
180°	0	0	0	0	0

LUMEN SUMMARY

	Zone Lumens	% Lamp	% Fixt
0°-30°	669	12.4	25.5
0°-40°	1096	20.3	41.8
0°-60°	1963	36.4	74.8
0°-90°	2624	48.6	100.0
Total Luminaire	2624	49	100

LUMINANCE DATA (CD/M²)

Vertical Angle	0°	45°	90°
45°	2393	2381	2377
55°	2372	2377	2327
65°	2436	2436	2387
75°	2662	2662	2539
85°	1868	1701	1768

CO-EFFICIENTS OF UTILIZATION

Floor	80				70				50				30				10				00			
Ceiling	70	50	30	10	70	50	30	10	50	10	50	10	50	10	50	10	50	10	50	10	50	10	50	10
Wall	58	58	58	58	56	56	56	56	54	54	52	52	52	52	50	50	50	50	49	49	49	49	49	
RCR 0	53	51	49	47	52	50	46	47	47	44	46	43	44	42	44	42	41	41	41	41	41	41	41	
1	48	44	41	38	47	43	38	41	41	37	40	36	38	35	38	35	34	34	34	34	34	34	34	
2	44	39	35	32	43	38	31	37	37	31	35	30	34	30	34	30	29	29	29	29	29	29	29	
3	40	34	30	27	39	34	27	32	32	26	31	26	30	26	30	26	24	24	24	24	24	24	24	
4	37	30	26	23	36	30	22	29	29	22	28	22	27	22	27	22	21	21	21	21	21	21	21	
5	34	27	23	19	33	27	19	26	26	19	25	19	24	19	24	19	18	18	18	18	18	18	18	
6	31	24	20	17	30	24	17	23	23	17	22	17	22	16	22	16	15	15	15	15	15	15	15	
7	28	22	17	15	28	21	15	21	21	14	20	14	19	14	19	14	13	13	13	13	13	13	13	
8	26	19	15	13	25	19	13	19	19	12	18	12	18	12	18	12	11	11	11	11	11	11	11	
9	24	18	14	11	24	17	11	17	17	11	16	11	16	11	16	11	10	10	10	10	10	10	10	
10																								

Numbers indicate percentage values of

Go to www.focalpointlights.com for additional photometric data.